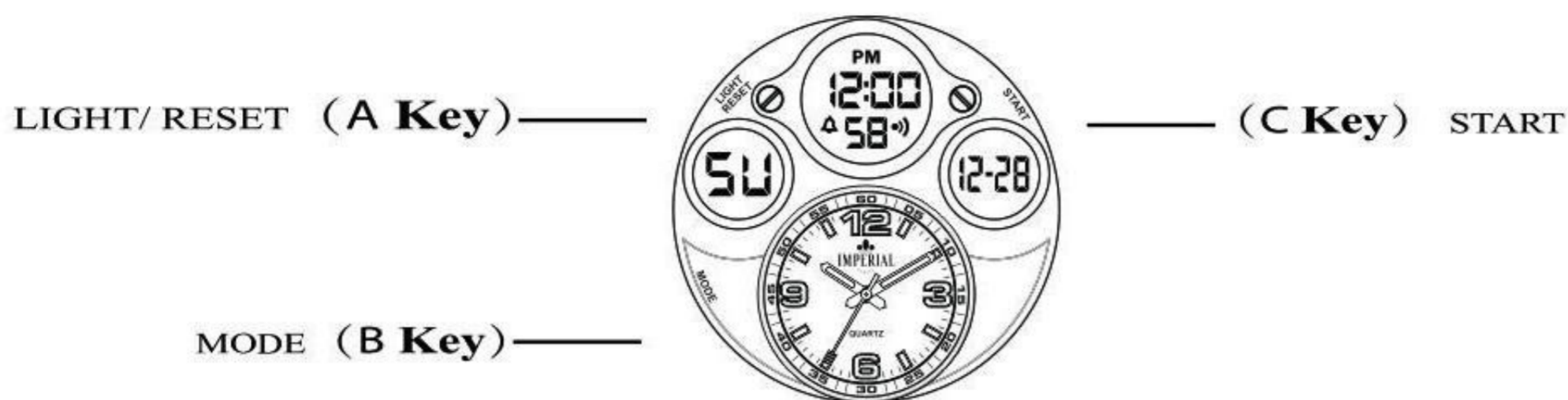


NOWLEY

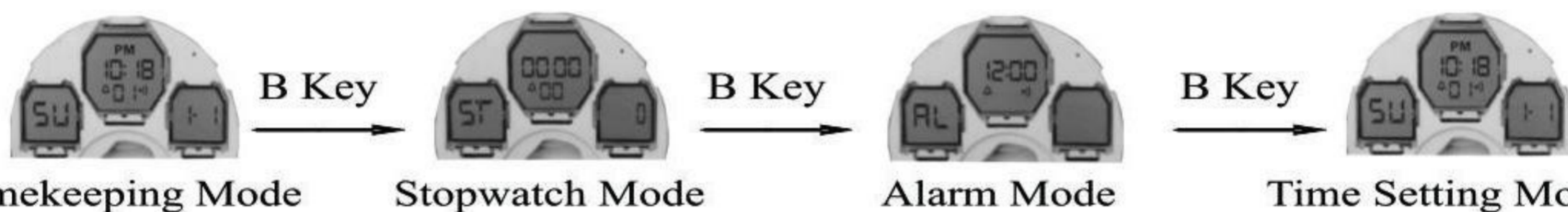
INSTRUCTION MANUAL 85492



A. Features

- 12 digits LCD screen displays hour, minute, second, month, date and week.
- Daily Alarm and Hourly Time Signal.
- Snooze
- 12-hour / 24-hour format selectable.
- 1/100 second stopwatch with split functions.
- EL backlight.

B. Operational Manual



1. In any mode, EL will illuminates for 3 seconds by pressing A key, press B key to select operation mode.

2. Stopwatch mode

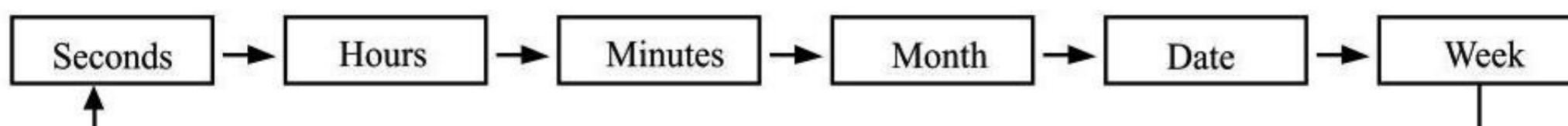
- The display range of the stopwatch is 23 hours, 59 minutes, 59.99 seconds, when reaches its limit (23 hours, 59 minutes, 59.99 seconds), the stopwatch will automatically re-start to count from zero.
- When stopwatch is more than 59 minutes 59.99 seconds, it will display from 1 hour to 23 hours at “date” position.
- **To measure times with stopwatch:** In stopwatch mode, press C key once to start counting, then press C key again to stop counting. When stop , press A key seconds clear to zero.
- **To measure times with split time:** In stopwatch mode, press C key to start counting, and press A key to enter split time, “SP”display on the screen, and press C button to stop counting, press A button to display all times of stopwatch, then stopwatch resets to zero by pressing A button.
- When stopwatch is running, press B key three times to return to time display mode, it will continue to run in the background.
- When at the state of split time, press B key to exit from split time, the stopwatch will continue to run in the background.

3. Alarm mode

- **To turn on / off Daily Alarm and Hourly Time Signal:** In alarm mode (“Hour” or “Minutes” not flash), press C key to turn on / off Alarm (●) and Hourly Time Signal (🔔) in sequence.
- **To set alarm time:** In alarm mode, press A key , “Hours” starts flashing, press C key to adjust hours , then press A key again, “Minutes” starts flashing, and press C key to adjust minutes, press A key again to exit from setting.
- When alarm time is reached, alarm tone will sound with BB-BB for 20 seconds, alarm indicator (●) will be flashing, press A, B, C to stop alarm tone after it starts to sound.
- **Snooze function:** When alarm tone sounds, press B key to turn on snooze function, at this time, alarm tone will sounds for 20 seconds in five minutes. Press A, B, C key to stop it.

4. Time setting mode

- In time setting mode, “Seconds” starts flashing, which indicates time setting screen, press C key to adjust “seconds” to zero, press A key to adjust setting items (flashing) in sequence as below:



- When related setting item is flashing, press C key to adjust, and press B key to exit from setting.
- When adjust “Hours”, it is 12-hour format if “A” or “P” indicator appears on the screen by pressing C key, while it is 24-hour format if “H” appears on the screen.

HOW TO SET TIME FOR 3 HANDS MODEL

If there is a plastic piece under the crown, gently remove it, press the crown down to normal position. Refer to the diagram below, gently pull the crown out to the first click position, The second hand will stop when the crown is in the first click position. When in the first click position, turning the crown will change the minute and hour hands. Set the correct time, then gently push the crown back to normal position, and the second hand will begin moving again indicating normal operation.

